



NELMOR-GRANULATE

WG SERIES THERMOFORM GRANULATORS



WG SERIES THERMOFORM GRANULATORS

Designed for continuous reclamation of skeletal web directly from the thermoform trim process, the WG Series granulators are available with 36" or 56" infeed widths. Throughput matches thermoformer output - for example, peak surge capacity is over 1500 lbs./hr. using a 3/8" screen.

Both feed rolls are polyurethane covered for maximum wear resistance. One roll is driven while the other is spring loaded, permitting slippage as necessary. A single motor drives both the rotor (directly) and the infeed roll (through a gear box). The rotor is mounted in pre-greased ball bearings, isolated to prevent contamination.

For low-power, low-RPM operation, six knives are mounted in an offset pattern on the alloy steel rotor in conjunction with two adjustable, stationary knives with double cutting edges. This means more lineal inches of cut, more capacity, and less likelihood of plugging. This extra capacity (not needed for normal operation) provides a surge capacity for handling incorrectly thermoformed material (as a start-up) that hasn't been trimmed.

The granulator is readily accessible. A front access door lifts off to fully expose both removable screens, bed knives, and rotor knives. Cleaning and adjustments are handled in a fraction of the time ordinarily required. The low-profile WG Series granulators are only 23 1/4" high, so they can be located directly beneath the trim press for the on-line operation with continuous airveyor removal.

STANDARD FEATURES

- 800—1500 lbs./hr. throughput
- 22 1/4" tall—low profile design perfect for under-the-press positioning
- Slant-cut cutting chamber
- 8" cutting circle diameter
- Machine-mounted blower available
- 7.5 HP Motor, 1800 RPM
- 2 models available: WG3600 (8" x 36" throat) or WG5600 (8" x 56" throat)
- 6" airveyor discharge



1100 E Woodfield Road
Schaumburg, IL 60173 USA
Tel. 847-273-7700 Fax 847-273-7804

www.aecinternet.com



**WHITLOCK/
MATERIAL
HANDLING**



HEAT & COOL



**BLEND &
RECLAIM**



**NELMOR/
GRANULATE**



**DOWNSTREAM
EXTRUSION**



AUTOMATE



**SYSTEMS
CONTRACTING**



SERVICE

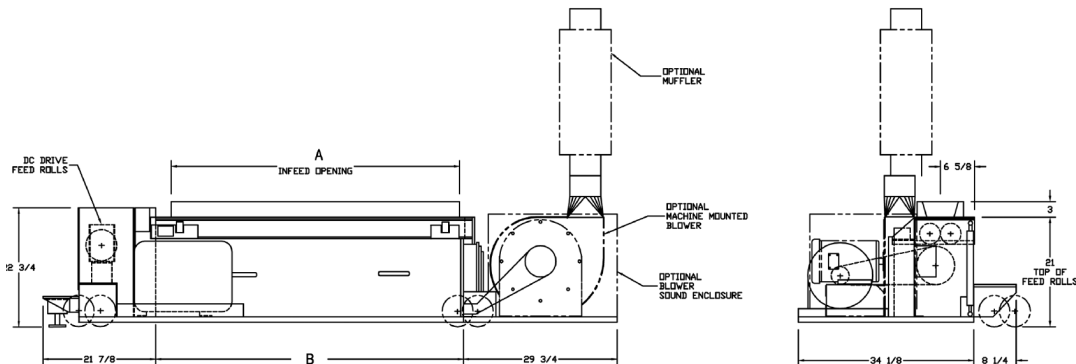


NELMOR-GRANULATE

WG SERIES THERMOFORM GRANULATORS

	Standard	Options
Infeed	Spring loaded driven feed roll - poly smooth	Both feed rolls driven; variable speed, paddle rolls; horizontal infeed hopper
Cutting Chamber	Solid steel sections up to 4" thick, internally ground to a high finish; 2 reversible bed knives, HCHC, opposing high chrome, high carbon steel, adjustable; 7.9" diameter cutting circle	Stainless steel or non-corrosive material contact surfaces; tungsten carbide surface coated knives
Rotor	Full body, high alloy steel, 3 knife slant cut; 6 high chrome, high carbon steel knives; steep angle, keen edge, in offset pattern	Tungsten carbide surface coated knives
Motor	7.5 hp, 1800 rpm	10 hp, 15 hp, 20 hp
Screen	5/16", reversible, 361G 1-piece, 381G 2-piece	1/4", 3/8", and larger to suit application, heat treated

Model	A	B
WG3600	36"	39.75"
WG5600	56"	59.75"



1100 E Woodfield Road
Schaumburg, IL 60173 USA
Tel. 847-273-7700 Fax 847-273-7804

www.aecinternet.com

