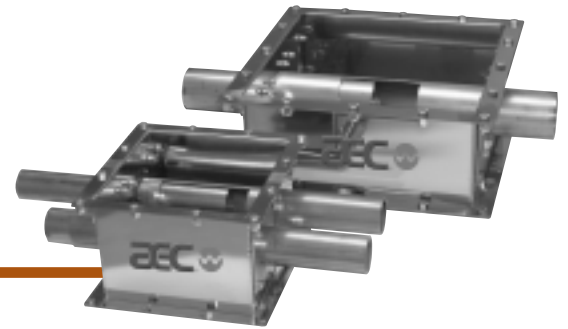




## MDT SERIES MODULAR TAKE-OFF BOXES

MDT modular take-off boxes are designed for regrind and hard-to-flow materials and provide durable construction in a simple modular design. The MDT Series take-off boxes feature stainless steel construction with stainless steel tube assemblies. The versatile modular design is compatible with a wide range of applications and allows for easy assembly and cleanout.

All compartments have adjustable tubes for air/material balancing.



MDT Modular Take-Off Boxes

### STANDARD FEATURES

- *Stainless steel box and tubes*
- *Available sizes: 16" (406mm), 10" (254mm) - square flanges*

### NOTES

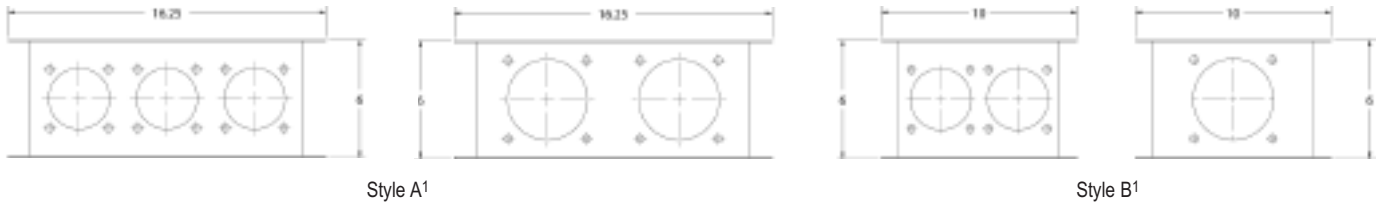
- *Check available clearance below bin mounting flange*
- *Pick correct box type to match your application*
- *Do not mix tube sizes without consulting the factory*
- *Use MDT dual tube modular take-off boxes if you are conveying hard-to-flow materials, such as flakes or powders*
- *Use MDT dual tube take-off boxes if you are conveying any material over 200 equivalent feet*
- *Consult factory for dry-air conveying applications or powder conveying applications*
- *Maximum three (3) box stack-up allowed (consult factory)*

### OPTIONAL FEATURES

- *Material clean-out gate*
- *Blank plate on bottom*
- *Adapter plate to mate to 7" x 7" or 9" x 9" square flange drying hoppers*
- *Take-off tubes: 1.5", 2", 2.5", 3", 3.5", 4"*

# MDT MODULAR TAKE-OFF BOXES

# MATERIAL HANDLING

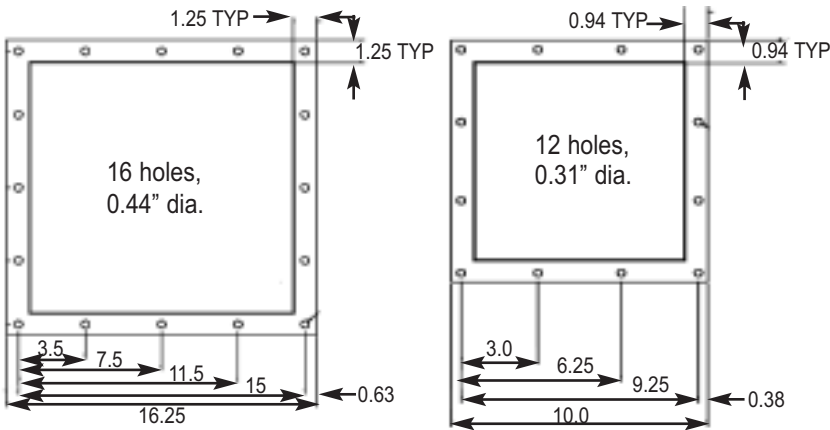


## SPECIFICATIONS

Style	Square Flange Size in. (mm)	Height, in. (mm)	Bolt pattern		Number of tubes per MTO box					
			Top	Bottom	1.5"	2.0"	2.5"	3.0"	3.5"	4.0"
A	16 (406)	6 (152)	16 holes	16 holes	3	3	3	3	2	2
B	10 (254)	6 (152)	12 holes	12 holes	2	2	2	2	1	1

1 See chart for maximum number of tubes available per section

## BOLT PATTERNS



## CLEAN-OUT GATES <sup>1</sup>

Style	H, in. (cm)	W, in. (cm)	D, in. (cm)	A, in. (cm)	B, in. (cm)
A	6.94 (17.6)	16.25 (41.3)	16.25 (41.3)	3.14 (7.9)	6.38 (16.2)
B	4.31 (10.9)	10 (25.4)	10 (25.4)	3.06 (7.8)	6.38 (16.2)

1 Clean out gate is optional. Flat bottom plate is standard.

